

At R6, remove resistor and solder in jumper

Keep R5 and all components in the Velleman MK138 kit same as MK138 schematic.



Velleman MK138 Temperature Controller

12V +

GND -

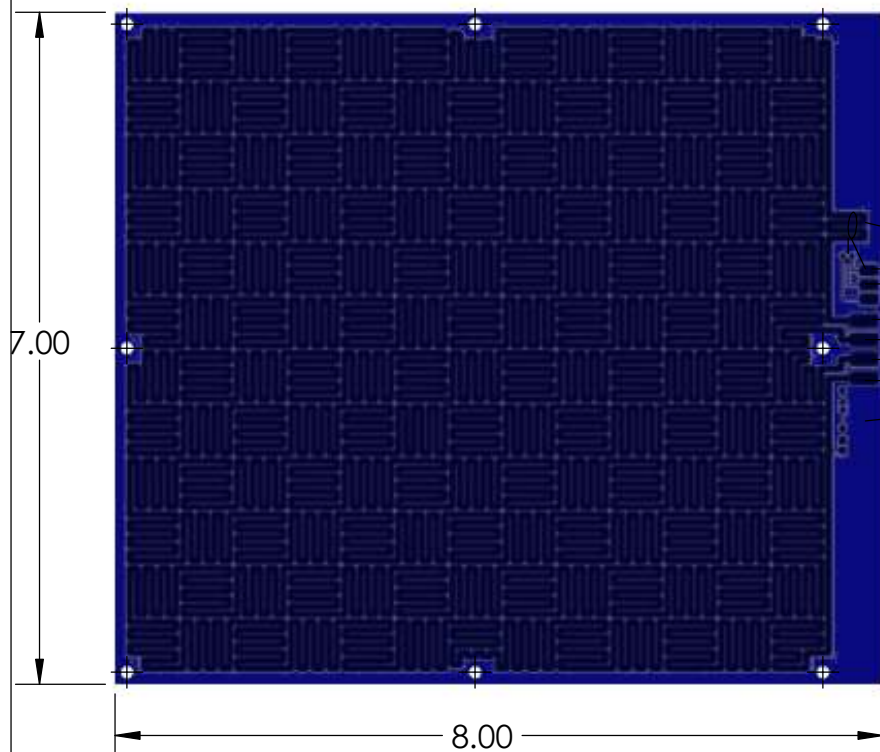
ATX Power Supply

Thermistor 4k @ 200C

this thermistor pad not used
cement thermistor using high temperature RTV silicone

Optional LED Indicator
solder 1k resistor and 12V LED

PCB Heated Bed



PROJECT:
Heated Bed Overall 7" x 8" x .06"

TITLE:
Electrical Wiring
Phebe I - Heated Bed
Print Area 6.5" x 7"

SIZE	DWG. NO.	REV
A	25926	1

©2012 SeeMeCNC™